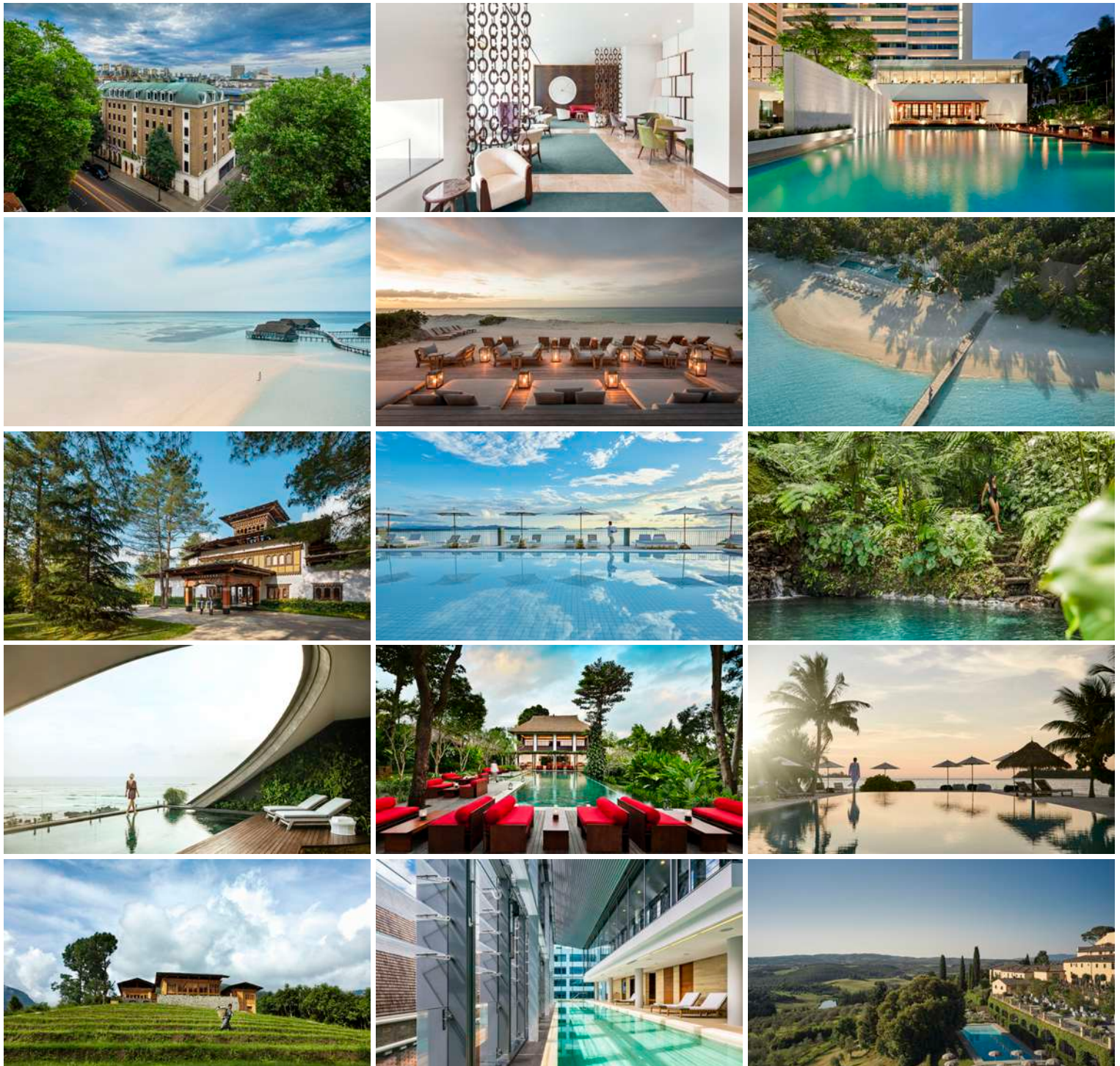




COMO
MAALIFUSHI
Fact Sheet



COMO Hotels and Resorts celebrates individual spirit. Our properties worldwide are entirely different from each other while sharing respect for exceptional cuisine, meaningful wellness, contemporary design, local culture, environment and service.

We strive to deliver experiences that are unique to you and the country you are visiting, from our city hotels in London, Perth and Bangkok, to island retreats in the Maldives, Turks and Caicos and Thailand, from wild lodges in Bhutan's Himalayan valleys to resorts in Bali and Italy.

This distinctive COMO approach is what makes our special events stand apart, from high-profile weddings on one of our private islands, to corporate events or incentive trips. Whatever the scale, we obsess about the details, turning ambitious ideas into precious memories worth reliving.



COMO Maalifushi, Maldives

Address: Thaa Atoll, Maldives

Location: COMO Maalifushi is located in the southern Thaa Atoll, a 60-minute seaplane flight from Malé International Airport.

The private island resort of COMO Maalifushi is located in the turquoise waters of the Maldives' southerly Thaa Atoll, just a 60-minute seaplane flight from Male International Airport, or a 45-minute seaplane flight from sister property, COMO Cocoa Island. COMO Maalifushi is comprised of 65 overwater suites and jungle villas.

The hotel offers three dining options: Madi restaurant serves a selection of international, Maldivian and healthy COMO Shambhala Cuisine, Thila pool and lounge bar specialises in salads, pizzas and wood-baked seafood and Tai serves Japanese-inspired sashimi and sushi with an ocean-facing cocktail bar.

COMO Shambhala Retreat provides holistic wellness and Asian-inspired therapies, including signature massages, facials and reflexology. Eight treatment rooms, some of them double, are set over the water with views across the Indian Ocean.



Beach Suite Bathroom



Garden Room Exterior



Beach Villa Exterior

Land Accommodation

6 Garden Rooms (72sq m/ 775sq ft): Our Garden Rooms are located in the centre of the island, shaded by the resort's tropical greenery and just a short foot-in-the-sand walk to all the resort's amenities including the COMO Shambhala Retreat and restaurants. They have an open-plan feel, and come with an outdoor deck and furniture for al fresco dining. Garden Rooms interconnecting with each other are available on request.

13 Beach Suites (101sq m/ 1,087sq ft): Nestled in the shade of COMO Maalifushi's lush gardens, Beach Suites have direct access to the beach and are extremely spacious and private, making them ideal for couples or families with small children. The suites have floor-to-ceiling French doors that open up on to their own private terrace with a pool, and the bedroom has a living area and an outdoor bathroom.

1 Two-Bedroom Beach Suite (131sq m/ 1,408sq ft): Sheltered in the shade, this stylish accommodation space offers the same facilities as our Beach Suites but with two bedrooms. The second bedroom offers twin beds and a smaller shower room, making it ideal for families.

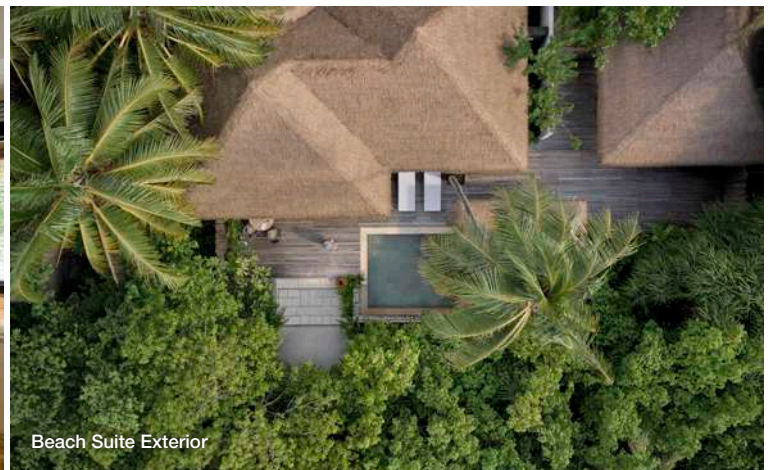
7 Beach Villas (116sq m/ 1,248sq ft): These one-bedroom villas have their own access to the beach, as well as their own private pool. Elegant, simple interiors are lit up with large windows to make the most of the island setting with French doors giving guests access from the bedroom to the terrace with their own private pool.



Beach Villa



Beach Suite Interior



Beach Suite Exterior

Land Accommodation

2 Two-Bedroom Beach Villas (145sq m/ 1,560sq ft): These two-bedroom villas (one king and one smaller twin room) have their own access to the beach, as well as their own private pool. Elegant, simple interiors are lit up with large windows to make the most of the island setting, with French doors giving guests access from the bedroom to the terrace where they can relax within their own private plunge pool.

1 Two-Bedroom Beach House (178sq m/ 1,916sq ft): Our two-bedroom duplex beach house leads on to its own private lawn. Surrounding a large private pool is a secluded sundeck complete with sun loungers and furniture, allowing you to eat, drink and watch the sun rise and set from the comfort of your own space.

1 Maalifushi Beach Villa (296sq m/ 3,186sq ft): Made up of two sleek, comfortable bedrooms (both doubles), the accommodation offers sunrise views out over an endless ocean. It features a private lawn and swimming pool with space for al fresco dining and a full butler service.

1 COMO Residence (356sq m/ 3,832sq ft): Our two-storey four-bedroom COMO Residence offers all the comfort that one would expect from a luxury COMO resort, combining endless sea views with a contemporary living area, spacious media room and full kitchen. The sundeck is completed with loungers and furniture—suitable for private dining, with butler service included.



Overwater Accommodation

17 Water Suites (107sq m/ 1,152sq ft): These overwater suites are located above the water and occupy their own jetty with spectacular views of the Maldivian sunrise. They feature a large bedroom with a living area and wide doors that open to a terrace with a plunge pool and direct access to the turquoise lagoon. The bathroom features a sunken bath and outdoor shower.

13 Water Villas (120sq m/ 1,292sq ft): Each of these spacious villas has a private pool, sundeck and full-length windows overlooking the Indian Ocean. The bedroom has a separate dressing area and the bathroom features a sunken bath and outdoor shower. The large and airy sitting area can double up as a sleeping area for children.

1 Maalifushi Water Villa (213sq m/ 2,293sq ft): This is one of COMO Maalifushi's most spectacular overwater villas: an oversized, two-bedroom, light-filled bungalow, which sits on its own secluded jetty, featuring a private pool and sundeck.

2 COMO Villas (408sq m/ 4,392sq ft): The two-bedroom overwater COMO Villa sits above the lagoon. This spacious villa comes with its own private pool and butler, making this COMO Maalifushi's ultimate luxury experience, with two large bedrooms suitable for two couples sharing, as well as families.

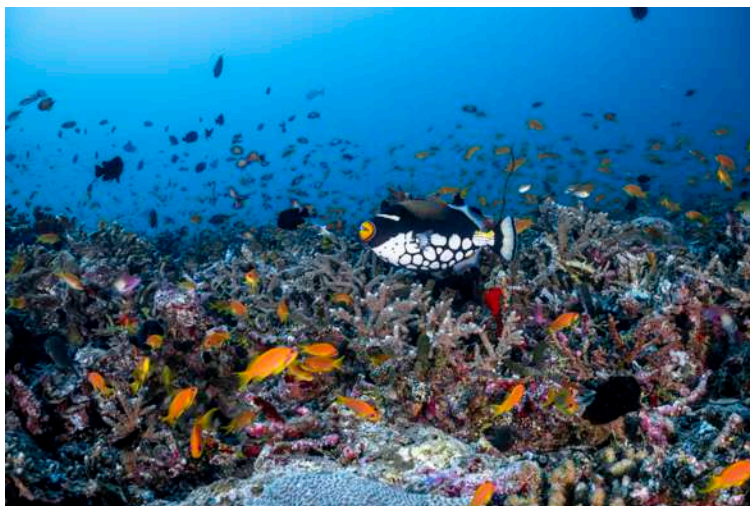


Guest Room Features

- King or twin beds (one room has twin beds)
- Bath and/ or separate shower stall
- Air-conditioning
- Private bar
- Tea and coffee making facilities
- Daily bottled water and fresh fruit
- IPTV (46-inch LCD)
- Direct dial telephone
- COMO Shambhala bathroom amenities
- Hairdryer
- Yoga mat (available on request)
- Private safe
- Wi-Fi access
- Beach bag and flip-flops
- Multimedia hub

Guest Services

- 24-hour manager on duty
- Wi-Fi access in reception, bar and poolside area
- Airport transfers
- Butler service
- Babysitting
- COMO The Shop
- Laundry service (no dry cleaning)
- Twice daily maid service
- In-room dining
- Foreign exchange
- Multilingual hotel staff
- All-day dining
- Travel and tour assistance
- Library
- Play by COMO children's programme
- Games room
- Gym



Activities and Nearby Attractions

- Dive and watersports centre
- Non-motorised watersports including surfing, snorkelling and sailing
- Cruises: Sunset, dolphin watching
- Fishing trips
- Beach picnics on uninhabited islands
- Swimming pool access
- Complimentary daily yoga



Tai Restaurant



Thila



Dining

Tai

COMO Maalifushi's Japanese restaurant, Tai, offers sushi and sashimi in an overwater setting. Tai's cocktail bar offers stunning views of the Maldivian sunset. In the high season Tai is open six days a week except Fridays, when a seafood barbecue is offered on the beach between Madi and Thila. In the low season Tai is closed on Mondays, Wednesday and Fridays.

Thila Bar

Laid-back music, a pool table and an open-air pool bar with ocean views make Thila the relaxed and vibrant heart of island life at COMO Maalifushi.

Madi

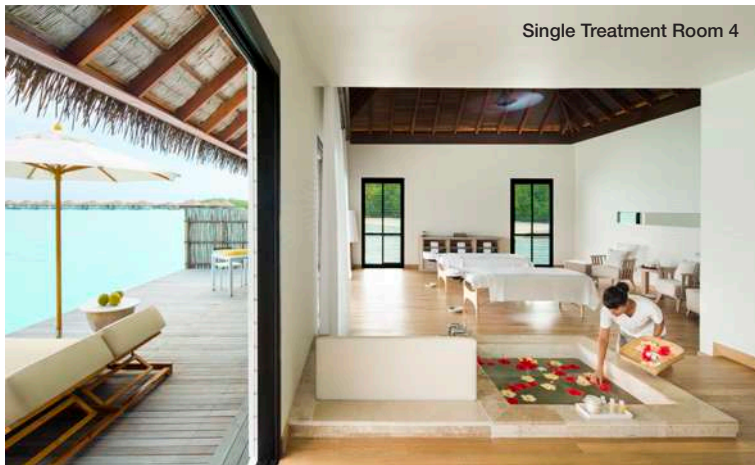
Menus at Madi are light and flavourful, with a range of local, Mediterranean, Indonesian and Thai-influenced dishes served from breakfast to late evening. Madi holds themed nights each week, including a local seafood barbecue, and 'Taste of the Indian Ocean' – a culinary journey through the region's most popular dishes. Expect a medley of sweet, sour, salty and hot flavours. Our signature COMO Shambhala Cuisine is also available at Madi – healthy food rich in living enzymes, vitamins and minerals.

In-Room Dining

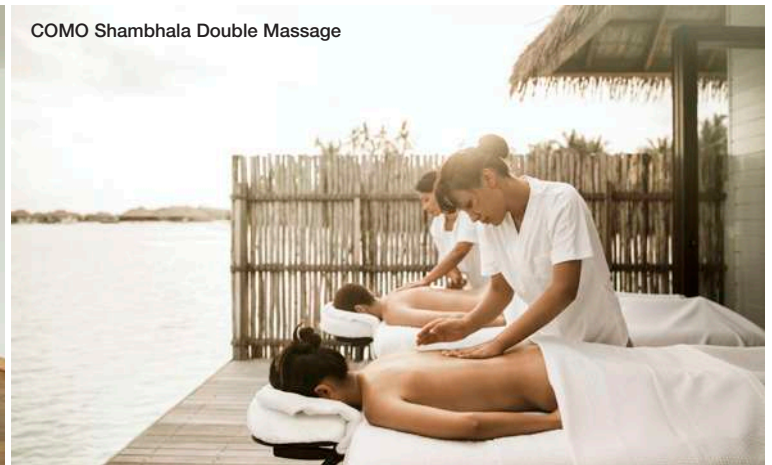
Available 24 hours a day.



Double Treatment Room 8



Single Treatment Room 4



COMO Shambhala Double Massage

Wellness

COMO Shambhala Retreat at COMO Maalifushi offers holistic, Asian-inspired treatments with views of the Indian Ocean. It is the embodiment of a philosophy for healthy living that COMO Shambhala has successfully refined at its award-winning retreats all over the world. There are eight overwater ocean-facing treatment rooms, steam rooms, a pool and an open-air yoga pavilion – all enveloped by blue horizons and gentle sea breezes.

- Fitness centre
- Eight treatment rooms
- Asian-inspired holistic therapies developed by COMO Shambhala, including massage and facials
- Pool
- Open-air yoga pavilion
- Separate male and female steam rooms
- Sauna and Jacuzzi
- Yoga Studio



Sustainability and Community Investment

At COMO Hotels and Resorts, we act as custodians, rather than managers, of each destination. We recognise the privileges and responsibilities of being part of the community. We are committed to celebrating local culture, supporting the domestic economy and minimising our impact on the environment.

At COMO Maalifushi, we aim to reduce our environmental footprint wherever possible by making the most of the island's natural resources such as using solar energy to generate 15 per cent of the energy used in the hotel, bottling fresh drinking water in glass bottles and supplying our kitchens with fresh fruit and vegetables from our organic garden. As a guest at COMO Maalifushi, you are welcome to join a tour to learn more about our garden and water bottling system.

We are dedicated to conserving the Maldives' rich marine life and encouraging our guests to learn more about the Indian Ocean whenever possible. Furthermore, we share new sightings of whale sharks with Ecocean to aid their cataloguing efforts, and are partnered with Reefscapers to implement our ongoing reef conservation project. You are invited to get involved in this coral propagation programme by helping to erect frames around the reef which help broken corals to regenerate.

Awards

Condé Nast Traveler – USA Readers’ Choice Awards 2021

Indian Ocean Top 30 Resorts – Ranked 5th

Condé Nast Traveler – USA Readers’ Choice Awards 2018

Indian Ocean Top 20 Resorts – Ranked 13th

Condé Nast Traveler – USA Readers’ Choice Awards 2017

Indian Ocean Top 20 Resorts – Ranked 10th

The Times and Sunday Times Travel Awards 2017

Best Long-Haul Hotel

Condé Nast Traveler 2015

US Hot List

UK Hot List

China’s Hot List

Travel + Leisure 2015

IT list

Southeast Asia IT list

China IT list

