

An aerial photograph of a tropical island at sunset. The sun is low on the horizon, casting a golden glow over the ocean and the island. The island is covered in lush green vegetation and palm trees. Several overwater bungalows are visible, connected by a wooden walkway. The water is a deep blue, and the sky is filled with soft, orange clouds. The overall scene is serene and picturesque.

# FACT SHEET



LE TAHA'A

By Pearl Resorts



# LE TAHA'A

## by Pearl Resorts,

Le Taha'a by Pearl Resorts welcomes you into a world of pristine beauty, a timeless universe of bare sophistication and authenticity.

Located on the secluded Motu Tautau, facing the island of Taha'a on one side and stunning views of Bora Bora on the other side, the resort inspired by Polynesian architecture and style hosts 58 beautiful suites and villas, three restaurants, a spa, a Fitness center, a tennis court, an open air swimming pool, a scuba diving center and a helipad.

Le Taha'a is the promise of a complete change of scenery, a way of life of its own, in harmony with its preserved environment, people and the local culture.



# Our Philosophy

At Le Taha'a, we strive at providing the ultimate authentic Polynesian experience and hospitality.

With majestic old trees that are said to be sacred and protect the land, the resort has been built around the existing vegetation, giving our guests a real sense of place in harmony with nature.

Algae is used as fertilizers, and the Resort's management has been very involved in helping preserving the beautiful coral garden that makes the joy of snorkelers.

The resort also recently joined the Biorock® project through "Espace Bleu", aiming at protecting and restoring coral life in the lagoons.

Lastly, Le Taha'a by Pearl Resorts is the second employer of the island, and our staff will welcome everyone in a very personalized way, and make their second home yours for a few days... or weeks.

We are all about that special touch, that attention which will make one's stay the most enjoyable and memorable one.

Le Taha'a is an invitation to get away from it all and connect with a land of powerful "mana" and good vibes.

Travelers visiting this little gem are those looking for the out of the ordinary! And this is what we are all about... Maeva, Welcome, Bienvenue!

## Relais & Châteaux

Charming houses where we like to share the passion for beauty and goodness.

At Relais & Châteaux, we are all artisans in the hotel and catering industry, heirs to the great cultural history of hospitality and world cuisine and we choose to be faithful to the mission we have given ourselves. : to preserve and transmit the uniqueness of cuisines and to remind every day, through our practice of craftsmen, that our humanity is expressed and is always resourceful in sharing the beautiful and the good.



# About the island of Taha'a

The island of Taha'a, formerly called Uporu, is located in the Society Islands (as are the islands of Bora Bora, Huahine and Maupiti) and shares a same lagoon as the island of Raiatea.

Raiatea, known as the Sacred Island and the center of the Polynesian triangle, played a major role in Polynesian migrations throughout the Pacific Ocean keeping an important historical and cultural aura of a still well-alive Polynesian civilization. 'Marae Taputapuatea', one of the largest ancient stone temples in French Polynesia remains one major attraction in Raiatea and was recently included on the Unesco Heritage list.



Taha'a is symbolically called the Vanilla Island.

It is on these fertile lands that the Tahitian vanilla is cultivated to become one of the best and most fragrant ones, sought after by the best Chefs around the world.

Tahitian pearls are also produced in Taha'a.

The island is blessed with lush mountains and valleys, turquoise lagoons, virgin "motu" islets, in one word: unspoiled!

The Vanilla Island has kept this Polynesian flair, and its inhabitants share a way of life that has remained truly authentic. Fishing, vanilla, pearl farms, agriculture and tourism are part of their daily lives.

There is something magical and poetic about Taha'a, and it just seems like time has stopped, allowing each and every one to enjoy this land of beauty at their own pace.



## Reaching us

Le Taha'by Pearl Resorts is located on a 'motu' islet, a 35-minute boat ride from the Raiatea Airport (transfers operated by the resort's boat shuttles) and a 5-minute boat ride from the marina of Tapuamu (free transfers from the resort during the day) on the main island of Taha'a.

From Tahiti and Bora Bora, there are daily flights to the island of Raiatea (RFP) with the domestic carrier Air Tahiti.

Please note that there is no airport in Taha'a. Raiatea (airport code RFP) will be the closest airport.

Upon arrival in Raiatea, one of our staff members will greet and escort you to the resort's private shuttle boat. You will reach Le Taha'a after a 35-minute beautiful scenic navigation.







### Services

- Complimentary Wi-Fi throughout the resort and rooms
- Concierge and Activities Desk
- Romance and wedding coordinator
- Currency exchange available from the resort's front desk (please note there is not ATM on site)
- Laundry service (there is no dry cleaning available)
- Secretarial services (photocopies, fax)

### Facilities

- 3 restaurants and 2 bars
- Tahitian pearl jewelry and gift shop
- Flood-lit tennis court
- Air-conditioned fitness center
- Open air swimming pool
- Spa
- Helipad
- Activities and concierge desk
- Air-conditioned lounge

### Complimentary

- Snorkeling equipment
- Stand Up paddle boards
- Kayaks
- Tennis court and equipment



# RESTAURANTS

## HAWAIIKI NUI Restaurant

Suspended among the trees, Hawaiiki Nui is the perfect place for a beautiful start to the day, offering relaxing views of the lush gardens and the multi-hued blue lagoon.

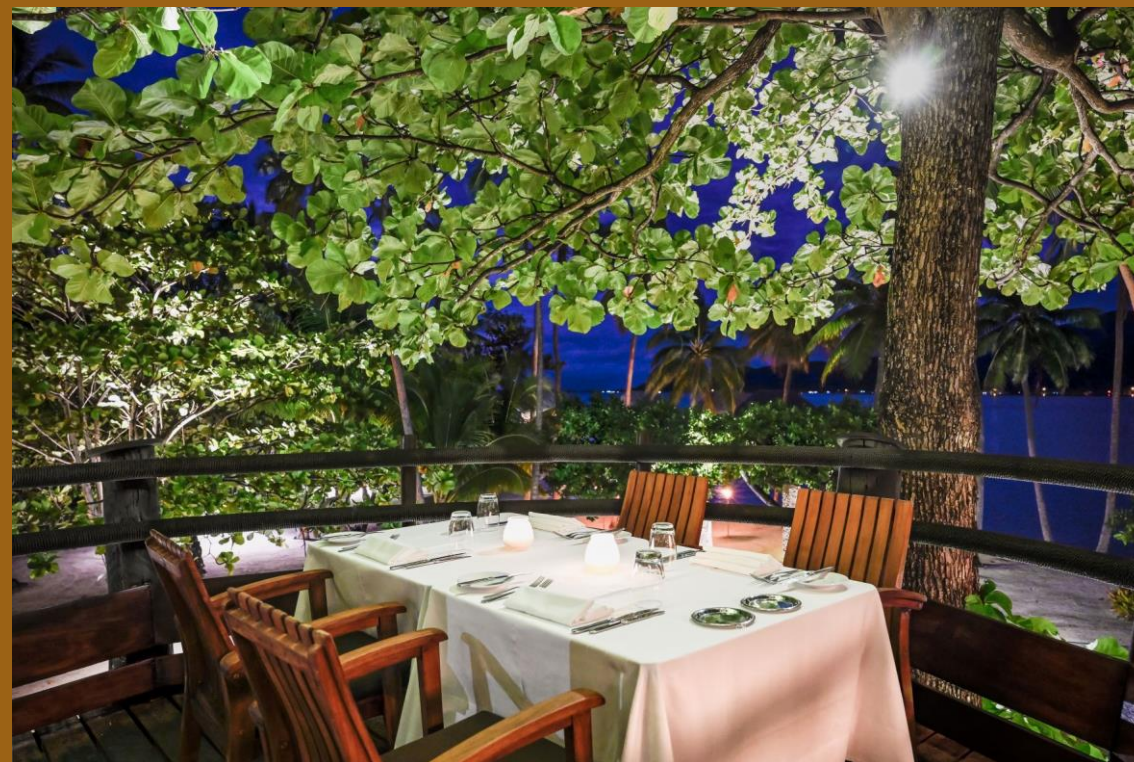
Enjoy a daily selection of juices, delicious danish and pastries, tasty tropical fruits, as well as fluffy omelettes or delicious French crêpes...

Dinner menu offers a nice selection of local and international specialties. Vegetarian and gluten free options are available.

Every Tuesday, a folkloric show with fire dancing will transport you to ancient Tahiti.

Breakfast: from 07:00am to 10:00am

Dinner: from 06:30pm to 09:30pm





## TITIRAINA Restaurant

Enjoy lunch “al fresco”, right on the beach and feet in the sand!

The Chef’s specialties include some tantalizing fresh, colorful salads, grilled fish or meat, sashimis and of course Tahitian’s well renowned “poisson cru”, a salad of raw tuna marinated with vegetables, lime juice and freshly squeezed coconut milk.

The Beach Bar, ‘Manuia Bar’, takes over for light snacks once Titiraina closes.

Lunch: from 12.00 to 03.00pm



## Gourmet Restaurant

In an intimate atmosphere, the Chef will delight you with exquisite French-Polynesian fusion creations. Not to forget a well-appointed selection of wines!

Setting is nice and cosy, perfect for a romantic dinner...

Reservations are required as places are limited.

The Ohiri can be privatized for families or groups and special events.

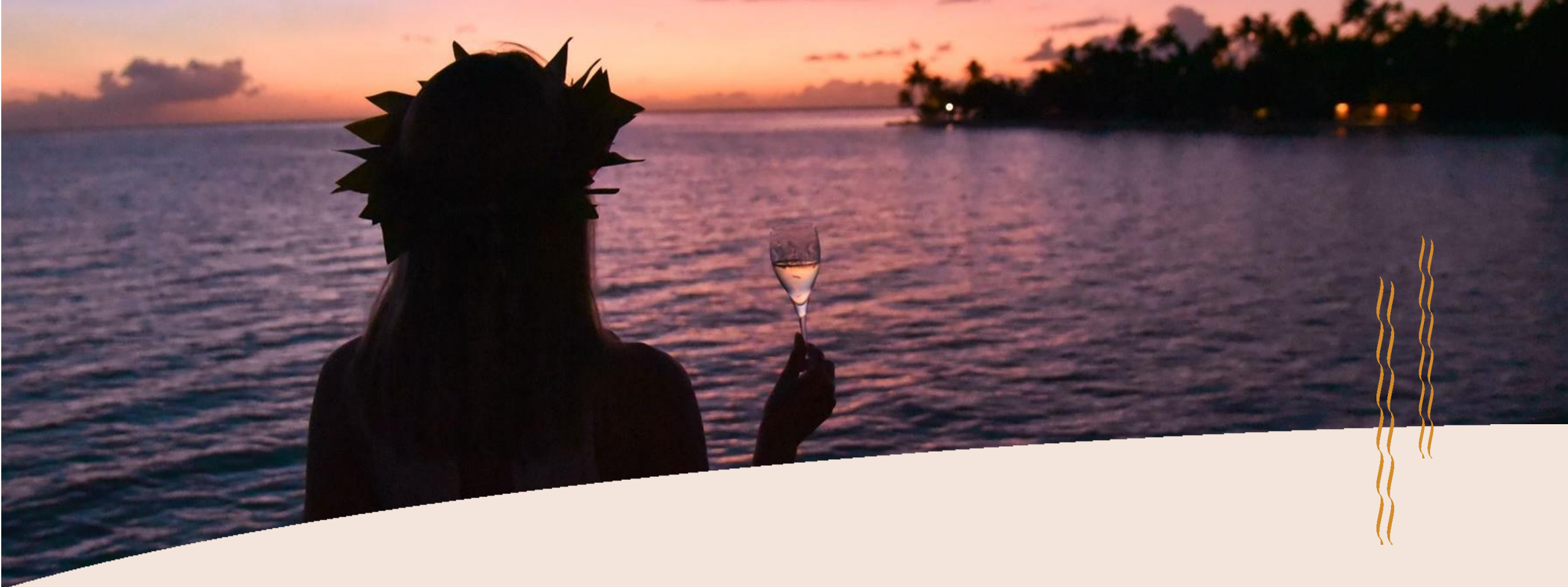
Dress code: Casual Smart (no shorts and no flip flops)

Please note that the Ohiri is closed on Mondays and Tuesdays.

Dinner: from 07.00 to 09.30 pm







#### ROOM SERVICE

- Available from 07:00am to 10:00pm

#### OPENING HOURS

- Please note that Bars and Restaurants Hours are subject to changes without notice

#### HALF-BOARD

- Guests purchasing the dinner plan can dine at Hawaiki Nui Restaurant.
- Supplements apply on certain items clearly marked on the menus







BARS



## TIKI Bar

Adjacent to Hawaiiki Nui restaurant, the Tiki Bar is the place to be for social gatherings before or after dinner.

You will enjoy a large choice of cocktails and drinks as well as the daily tapas selection from the Chef!

Open from 06:00pm to 10:30 pm





## MANUIA Bar

“Manuia “means “cheers” in Tahitian!

Located by Titiraina restaurant, the Manuia Swim Up Bar will be the ideal place for a refreshing cocktail as you lounge by the pool or relax on the beach.

Lights snacks are served from 3:00pm and Happy Hour from 4:00pm to 5:30pm.

Open from 10:00am to 6:00pm





# TĀVAI SPA



## TĀVAI SPA

The Spa is nestled in a beautiful exotic garden, overlooking the calm resort's interior lagoon and surrounded by bamboo trees.

This little haven of peace is a true escape to a world of color, energy and deep relaxation...

A wide range of massages as well as body exfoliations and body wraps are available. Locally made products are used for the majority of our treatments.

"Monoi", the sacred traditional Polynesian oil infused from coconuts and flowers is used for most treatments. This gift from earth will feed your imagination, and transport you to be in perfect harmony with nature. A reward for all senses...

Polynesian "taurumi" massage is transmitted from generation to generation. It aligns the energies, rebalancing body and mind. A voyage to Le Taha'a would not be complete without a little escape at the Tāvai Spa.

Open everyday from 2:00pm to 6:00pm

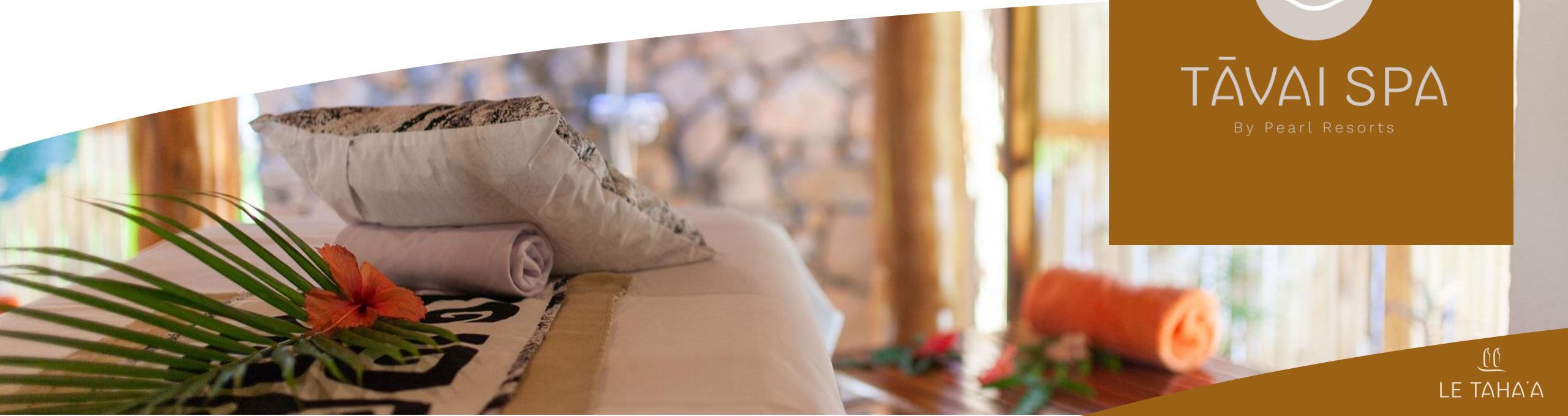
[tavaispa@letahaa.com](mailto:tavaispa@letahaa.com)

## Pampering



# TĀVAI SPA

By Pearl Resorts



LE TAHA'A

STAY ON THE MOTU



# Pool Beach Villa & Premium Pool Beach Villa

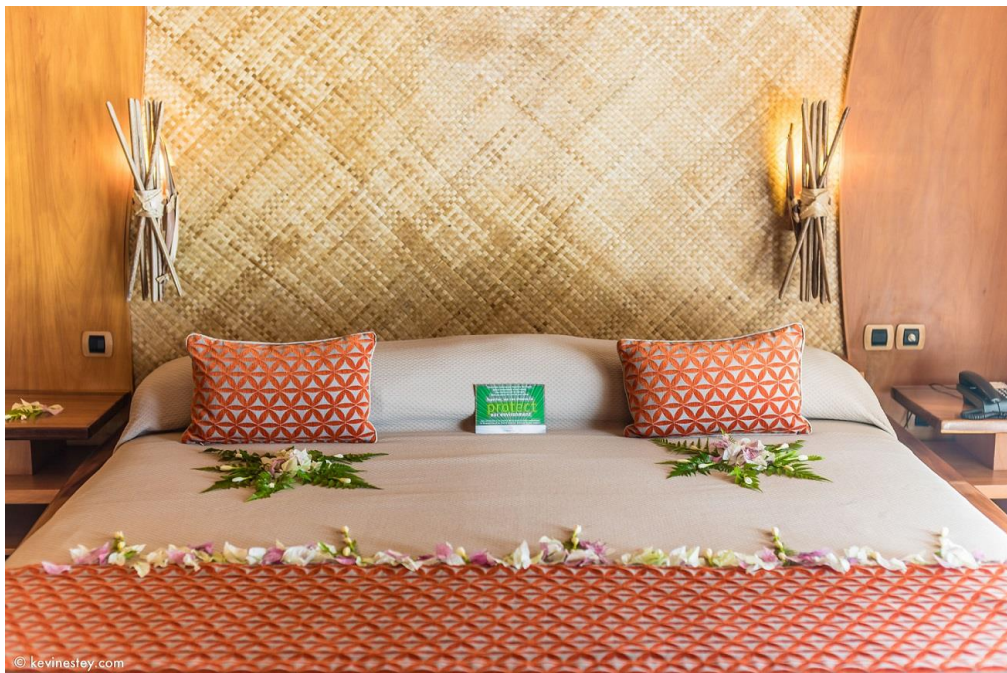
- 180 sq. meters – 1937 sq. ft
- Fully air conditioned and ceiling fan
- In room safe and mini bar
- Private plunge pool (pool fence available upon request)
- Private enclosed garden and deck with gazebo providing a shaded area
- En-suite bathroom with shower and separate outdoor bath tub set in a tropical garden
- Satellite TV (French and English channels)
- Nespresso Coffee machine and tea making facilities
- Wifi internet access
- Bathrobes and slippers
- Desk
- Direct access to the beach
- Lagoon view



- The Premium are located end of the beach area offering more privacy and a better view on the lagoon of Taha'a



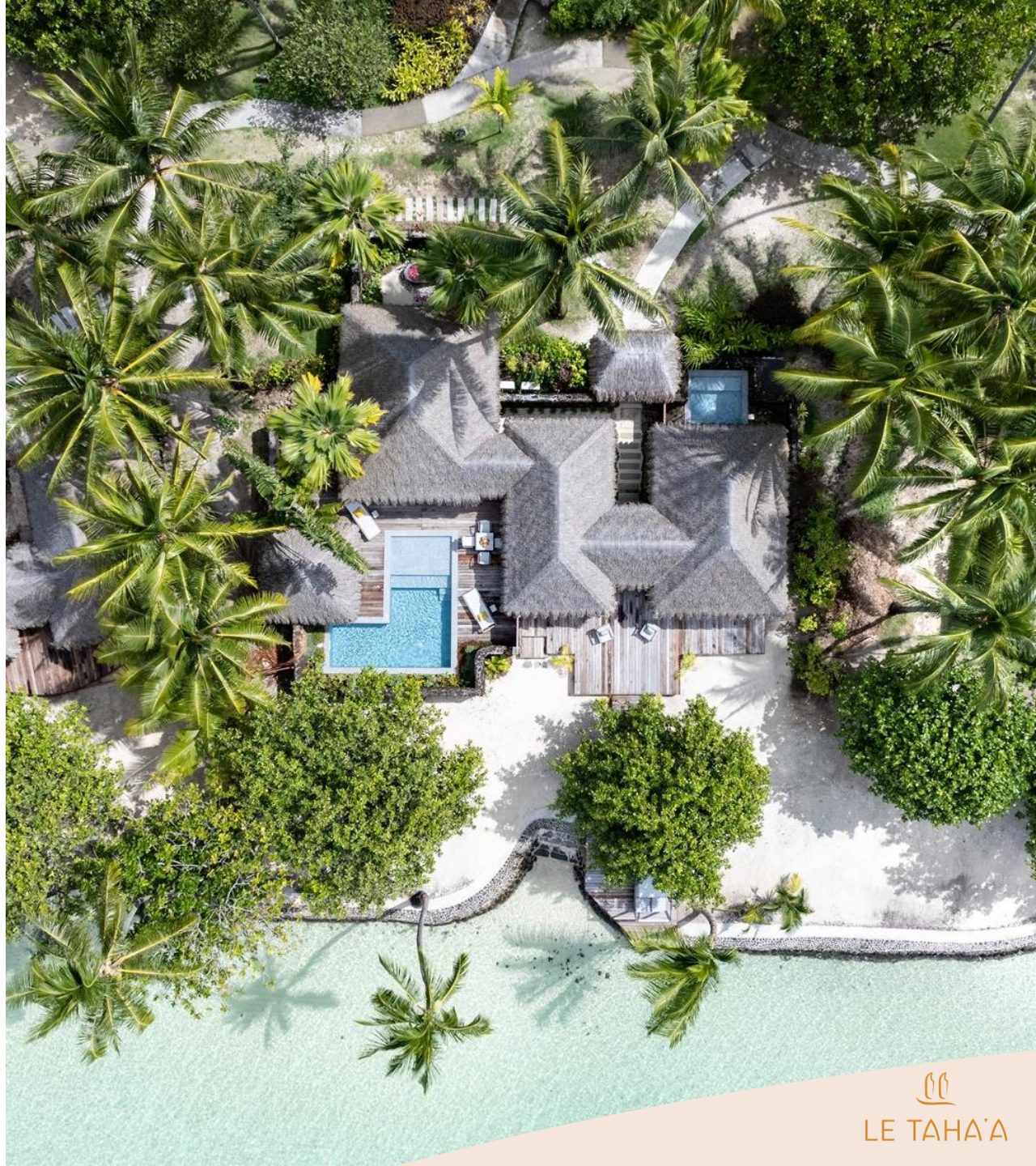






# Royal Pool Beach Villa

- 260 sq. meters – 2800 sq. ft
- 2 bedrooms
- Fully air conditioned and ceiling fan
- In room safe and mini bar
- 24 sq. meters private plunge pool (pool fence available upon request)
- Private enclosed garden and deck with gazebo providing a shaded area
- 2 en-suite bathrooms with shower and separate outdoor bath tub set in a tropical garden
- Satellite TV (French and English channels) in each room and living room
- Nespresso Coffee machine and tea making facilities
- Desk
- Bathrobes and slippers
- iPod dock
- Wifi internet access
- Direct access to the beach
- Lagoon view







  
LE TAHA'A



  
LE TAHA'A





STAY OVER THE WATER



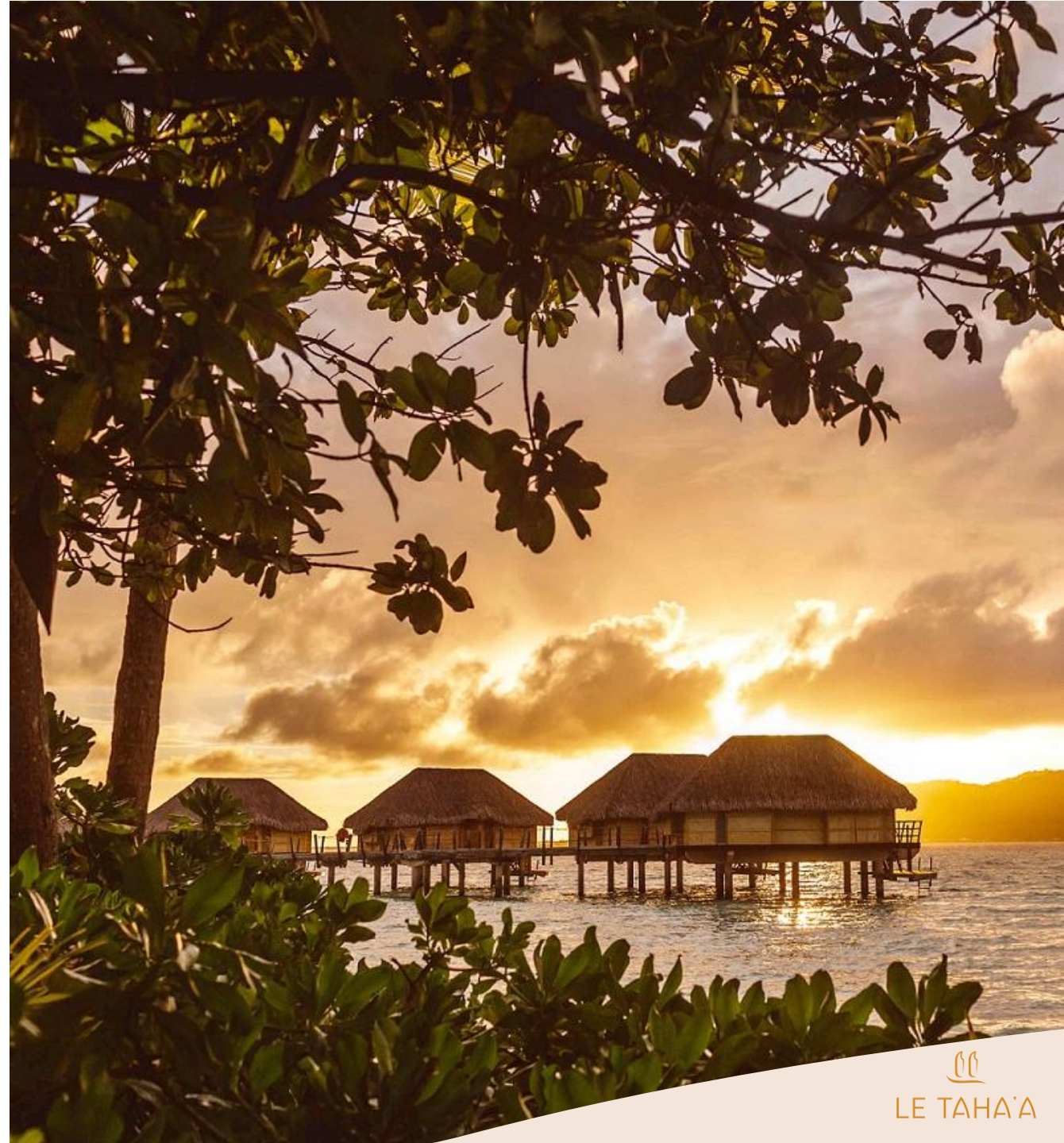


Overwater Suite / Suite Pilotis : 969 sq. ft (90 sq. meters)



## Taha'a Overwater Suite

- 90 sq. meters – 968 sq. ft
- Air conditioning and ceiling fan
- In-room safe and mini bar
- Desk
- Glass panel at the end of the bed
- Private deck with shaded sitting area, direct access to the lagoon and shower
- Full shower and separate bath tub
- Bathrobes and slippers
- Satellite TV (French and English channels)
- Nespresso Coffee machine and tea making facilities
- Wifi internet access
- Views of Taha'a, the Vanilla Island





# Taha'a Premium Overwater Suite

- 90 sq. meters – 968 sq. ft
- Air conditioning and ceiling fan
- In-room safe and mini bar
- Desk
- Glass panel at the end of the bed
- Private deck with shaded sitting area, direct access to the lagoon and shower
- Full shower and separate bath tub
- Bathrobes and slippers
- Satellite TV (French and English channels)
- Nespresso Coffee machine and tea making facilities
- Wifi internet access
- Unobstructed view of the lagoon with the islands of Taha'a at the back





## Sunset Overwater Suite

- 90 sq. meters – 968 sq. ft
- Air conditioning and ceiling fan
- In-room safe and mini bar
- Desk
- Glass panel at the end of the bed
- Private deck with shaded sitting area, direct access to the lagoon and shower
- Full shower and separate bath tub
- Bathrobes and slippers
- Satellite TV (French and English channels)
- Nespresso Coffee machine and tea making facilities
- Wifi internet access
- Views over the lagoon and sunset





## Bora Bora Overwater Suite

- 90 sq. meters – 968 sq. ft
- Air conditioning and ceiling fan
- In-room safe and mini bar
- Desk
- Glass panel at the end of the bed
- Private deck with shaded sitting area, direct access to the lagoon and shower
- Full shower and separate bath tub
- Bathrobes and slippers
- Satellite TV (French and English channels)
- Nespresso Coffee machine and tea making facilities
- Wifi internet access
- Views over the lagoon and the island of Bora Bora





## End of Pontoon Overwater Suite

- 90 sq. meters – 968 sq. ft
- Air conditioning and ceiling fan
- In-room safe and mini bar
- Desk
- Glass panel at the end of the bed
- Private deck with shaded sitting area, direct access to the lagoon and shower
- Full shower and separate bath tub
- Bathrobes and slippers
- Satellite TV (French and English channels)
- Nespresso Coffee machine and tea making facilities
- Wifi internet access
- Views of Taha'a, unique location





ROOM CATEGORY	NUMBER OF ROOMS	MAXIMUM OCCUPANCY	BEDDING CONFIGURATION
Taha'a overwater suite 90m2 (969 sq. ft)	12	2 AD + 1 CHD + 1 BB 3 AD + 1 BB 3 AD	1 King + 1 SGL Bed + Crib 1 King + 1 SGL Bed + Crib 1 King + 1 SGL Bed
Taha'a Premium overwater suite 90m2 (969 sq. ft)	18	2 AD + 1 CHD + 1 BB 3 AD + 1 BB 3 AD	1 King + 1 SGL Bed + Crib 1 King + 1 SGL Bed + Crib 1 King + 1 SGL Bed
Bora Bora overwater suite 90m2 (969 sq. ft)	8	2 AD + 1 CHD + 1 BB 3 AD + 1 BB 3 AD	1 King + 1 SGL Bed + Crib 1 King + 1 SGL Bed + Crib 1 King + 1 SGL Bed
Sunset overwater suite 90m2 (969 sq. Ft)	6	2 AD + 1 CHD + 1 BB 3 AD + 1 BB 3 AD	1 King + 1 SGL Bed + Crib 1 King + 1 SGL Bed + Crib 1 King + 1 SGL Bed
End of pontoon overwater suite 90m2 (969 sq. ft)	4	2 AD + 1 CHD + 1 BB 3 AD + 1 BB 3 AD	1 King + 1 SGL Bed + Crib 1 King + 1 SGL Bed + Crib 1 King + 1 SGL Bed
Pool beach villa 180m2 (1937 sq. ft)	6	2 AD + 2 CHD 2 AD + 1 CHD + 1 BB 3 AD + 1 CHD	1 King + 1 SGL Bed + Rollaway 1 King + 1 SGL Bed + Crib 1 King + 1 SGL Bed + Rollaway
Premium Pool beach villa 180m2 (1937 sq. ft)	3	2 AD + 2 CHD 2 AD + 1 CHD + 1 BB 3 AD + 1 CHD	1 King + 1 SGL Bed + Rollaway 1 King + 1 SGL Bed + Crib 1 King + 1 SGL Bed + Rollaway
Royal pool beach villa 260m2 (2800 sq. ft)	2	5 AD 5 AD + 1 BB 5 AD + 1 CHD 4 AD + 1 CHD + 1 BB 4 AD + 2 CHD	2 King + 1 SGL Bed 2 King + 1 SGL Bed + Crib 2 King + 1 SGL Bed + Rollaway 2 King + 1 SGL Bed + Crib 2 King + 1 SGL Bed + Rollaway





Resort map



# Romance

## Say “I Do” in Paradise

With such a magical natural setting, Le Taha’a by Pearl Resorts exudes romance and love.

Let our team help you coordinate every aspect of your celebration, whether it is a Polynesian wedding, a renewal of vows or proposing! Likewise, ask us about our selection of romantic rendez-vous, crafted to create lifetime memories of your Polynesian escape.

Contact: [activities@letahaa.com](mailto:activities@letahaa.com)





## The little ones

Are considered children those under the age of 13 years old. Are considered babies and infants those under the age of 3 years old.

Day beds (single bed) are available in all of our suites and villas. Should an extra bed be required, a rollaway bed can be set up in room (Please note that it is not possible to add a rollaway bed in the Overwater Suites).

We recommend the Pool Beach Villas or Royal Pool Beach Villas for families traveling with more than one child or families with young children. The Beach Villas' plunge pool can be child-proofed.

A Kids' Menu is available at Hawaiki Nui and Titiraina restaurants. Kids eat for free from the Kids' Menu (drinks not included and charged at regular rates). A 50% discount applies for themed dinners or festive season dinners. There is no discount for children on the regular menu.

GOOD TO  
KNOW





## Guests with Limited Mobility

Three Taha'a Overwater Suites are equipped for guests with limited mobility.

Cement paths or wooden decks connect the Suites to the public areas (accessible restrooms.)

An elevator in the main building allows access to the Hawaiki Nui Restaurant and Tiki Bar.

Transfers between the Raiatea airport and the resort are done by boat. Please note that the boats are not equipped with ramps and embarkation as well as disembarkation may be challenging.

Our staff is available to assist at all times.

GOOD TO  
KNOW







### The « Musts »

- Snorkeling in the Coral Garden: it is at your fingertips! Simply the absolute best snorkeling in Taha'a. And it is for free!
- A massage, a body exfoliation, a relaxing bath: indulge and get pampered at the Spa
- Stand Up paddle boarding: with an infinite water playground around the resort, enjoy gliding on these crystal-clear waters. Great workout in paradise!
- Taha'a Discovery Tour: book one of the amazing tours that will take you to a vanilla plantation and a pearl farm. Talk to our Concierge Desk
- Unesco Heritage Site: step back in time and explore sacred Marae Taputapuatea on the neighbouring island of Raiatea





### Useful tips to prepare your trip

- The Islands of Tahiti are tropical islands and receive a lot of sunshine as well as unpredictable rain showers. Bring a lot of sun protection !
- Although most resorts do their best to act against insects and mosquitoes, tropical weather conditions can affect the treatments done. Mosquito repellent is highly recommended when traveling to the Islands of Tahiti in general
- Please note that there is no ATM on the island of Taha'a nor on property. Major credits cards are accepted for payment on site and on the main island of Taha'a

### Awards

- From 2016 to 2019: Travelers' Choice Trip Advisor
- 2016 Brides Honeymoon Award for Top Resort in the South Pacific
- 2015 Condé Nast Readers' Choice - #4 of the Top 25 Resorts in Australia and the South Pacific
- 2014 & 2015 Certificate of Excellence "Trip Advisor"
- 2014 Condé Nast Traveler, Readers' Choice Awards "Best Beach Resorts in the World" & "Best Resorts in South Pacific"



# LE TAHA'A BY PEARL RESORTS

B.P. 67  
98733 Patio, Taha'a  
French Polynesia

Reservations:  
[reservations@pearlresorts.com](mailto:reservations@pearlresorts.com)

Contact:  
[welcome@letahaa.com](mailto:welcome@letahaa.com)

VISIT OUR  
WEBSITE

[www.letahaa.com](http://www.letahaa.com)



**RELAIS &  
CHATEAUX**